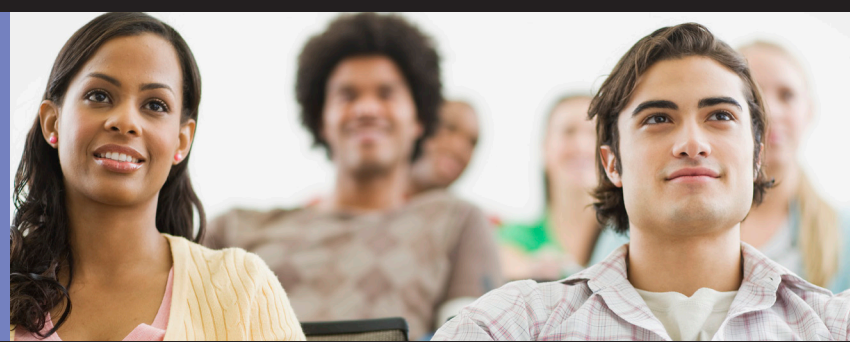


MISSOURI CARE BEHAVIORAL HEALTH INFORMATION



TREATING CHILDREN AND ADOLESCENTS WITH DEPRESSION

Pediatrics and American Academy of Child and Adolescent Psychiatry have developed guidelines for the treatment of depression. These guidelines can be found at: <http://pediatrics.aappublications.org/cgi/content/abstract/120/5/e1299>.

No guideline should be considered the sole source of guidance for the treatment of a particular disorder. They are designed to provide a framework for treatment decisions. They are not intended as a protocol of treatment measures or to replace the clinical judgment of the provider.

Missouri Care, an Aetna Health Plan

For additional information, please contact Ronald L Lacey, MD,
Medical Director of Behavioral Health at ron.lacey@aetna.com or at 1-800-889-4073.

Questions?

Call Behavioral Health Services
at 1-800-889-4073
www.MissouriCare.com



Missouri CareSM
AN AETNA HEALTH PLAN